

Model Information



■ Features

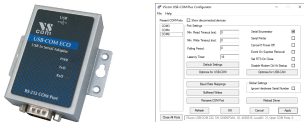
- 1 x RS232
- USB 2.0 Full Speed interface
- 2.5kV isolation per serial port
- USB and serial ports ESD protected
- Robust metal case
- Serial speed max. 460.8 (500) kbps
- DIN-Rail and Wall mount options
- Bus powered, no external power supply
- Wide range operating temperature (-25°C - +75°C)

[Contact Online...](#)

USB-COM ECO ISO (USB-COM SI-M)

Quick Link: | [Features](#) | [More Pictures](#) | [Overview](#) | [USB Interface](#) | [Serial Interface](#) | [Software](#) | [Power and Environment](#) | [Standards](#) | [Ordering Information](#) | [Options](#) | [Packaging](#) |

■ More Pictures



Click on the thumbnails for the large picture ...

[>Back to top](#)

■ Overview

The modern USB-COM ECO ISO adapter connects one RS232 device to your PC by a USB 2.0 Full Speed port. The serial port is isolated for 2.5kV. The serial port and USB are ESD protected, compliant to IEC 61000-4-2 (8kV contact/16kV air discharges).

Standard Drivers are available for all major operating systems.

The USB 2.0 Full-Speed enables serial data rates of up to 500kbps, and also allows every non-standard bitrate.

The USB-COM ECO ISO is an alternative to the VScom USB-COM SI-M.

■ USB Interface

USB-Input	USB 2.0 Full Speed, USB 1.1 compliant
Connector	USB type B
Protection	Compliant with IEC 61000-4-2 ESD 8kV contact / 16kV air discharge

[>Back to top](#)

■ Serial Interface

Port	1 x RS232, Connector DSub-9 male
Speed	180bps – 460.8/500kbps
Signals	TxD, RxD, RTS, CTS, GND All signals isolated for 2.5kV

Protection	<ul style="list-style-type: none"> Galvanically isolated 2.5kV Compliant with IEC 61000-4-2 ESD 8kV contact / 16kV air discharge 	>Back to top
■ Software		
Driver	<ul style="list-style-type: none"> Windows 2000 to Windows 10 (x86 and x64) Windows Server 2000 to 2012 (x86 and x64) Linux (Kernel 2.6 and later built-in) Mac OS X <p>Installation by automatic download from the Internet</p>	>Back to top
■ Power and Environment		
Connector	USB bus powered, no external supply	
Power	5V@60mA via USB port; max. 0.3W	
Protection	Compliant with IEC 61000-4-2 ESD 8kV contact / 16kV air discharge	
Dimensions	50×72×22 mm ³ (W×L×H) Case 72×72×22 mm ³ (W×L×H) with mounting wings	
Operating Temp.	-25°C - +75°C	
Storage Temp.	-30°C - 85°C	
Case	SECC sheet metal (1mm)	
Weight	120 g	
Mounting	Desktop use <ul style="list-style-type: none"> DIN-Rail (optional) Wall mount 	
LEDs	LEDs for Power (Red), serial Tx (Green), Rx (Yellow)	>Back to top
■ Standards		
Declarations	CE, FCC	
EMI	<ul style="list-style-type: none"> EN 55022 Class B 47 CFR FCC Part 15 Subpart B 	
EMS (EN 55024)	<ul style="list-style-type: none"> EN 61000-4-3: Radiated RFI EN 61000-4-4: Electrical Fast Transient EN 61000-4-5: Surge EN 61000-4-6: Induced RFI EN 61000-4-8: Power Frequency Magnetic Field EN 61000-4-11: Power supply dips 	
ESD	EN 61000-4-2 4kV contact 8kV air for <ul style="list-style-type: none"> Serial Port USB 	>Back to top
■ Ordering Information		
634	USB-COM ECO ISO (1x RS232, isolated)	
633	USB-COM ECO (1x RS232, non-isolated)	
>Back to top		
■ Options		
662	DK 35A DIN-Rail mounting kit	
661	Serial Null-Modem adapter 9PF-9PF, change male to female	
>Back to top		
■ Packaging		
Packing list	<ul style="list-style-type: none"> USB-COM ECO ISO device USB 2.0 High-Speed cable 4 rubber feet for table mode 	

USB-COM ECO ISO

[>Back](#)



USB-COM Plus Configurator

[>Back](#)

VScom USB-COM Plus Configurator

File Help

Present COM-Ports Show disconnected devices

COM3
COM4
COM6

Port Settings

Min. Read Timeout (ms): Serial Enumerator

Min. Write Timeout (ms): Serial Printer

Polling Period: Cancel If Power Off

Latency Timer: Event On Surprise Removal

Set RTS On Close

Disable Modem Ctrl At Startup

Default Settings

Optimize for USB-COM

Optimize for USB-CAN

Baud Rate Mappings

Global Settings

Buffered Writes

Ignore Hardware Serial Number

Rename COM Port

Reload Driver

Refresh

OK

Cancel

Apply

Close All Ports

VScom USB-COM 232, SN: DN6NP3AA, ID: 4036015, LocalID: 31; Open COM Ports: 0