



## VScom 800H PCIex

8 RS232 ports PCI Express Card

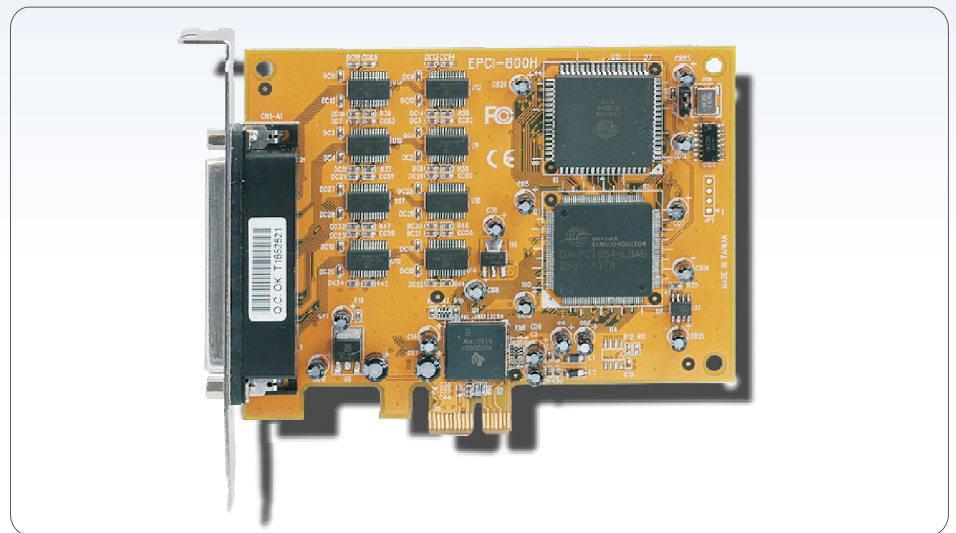


### KEY FEATURES

- PCI Express x 1
- 8 x RS232
- 16C950 (128 Byte FIFO)
- 921 kbps
- PCI Plug and Play
- Software compatibel with DOS, Win3.11/95/98/ME/NT/2000, XP,Vista, OS/2 and div. Unix

### Overview

The high speed serial ports with their 128 byte long FIFO are best for high speed communication, even in heavy loaded systems. Many unique features reduce the system load. They also allow very unusual speed settings such as 500.000bps..



### Specifications

Hardware	
Ports	8 x RS232 (Rx/D, Tx/D, RTS, CTS, DTR, DSR, DCD)
UART	8 x 16C950 (128 Byte FIFO)
Address	Plug and Play
Interrupts	PCI Plug and Play, only one interrupt per card
Speed	Max. 921 kbps
Bus Interface	PCI Express x 1
Connectors	1 x Db62
Temperature	0°C - 55°C
High Performance Features	
FIFO	Adjustable FIFO length, 1 up to 128 Bytes; separate adjustable Rx and Tx
Handshake	RTS / CTS, DTR / DSR, Xon / Xoff, all handshake automatic on Chip
Speed	1 bps up to 921 kbps, unusual Baudrates, Multiplication factor for legacy applications
Access	High speed access via Memory
UART	UART emulation of 8250 up to 16850
Operating Systems	
WIN95, WIN98, ME	VScom high performance serial driver
WIN NT 4.0	VScom high performance serial driver; control panel applet
WIN 2000, XP, Vista	VScom high performance serial driver
Win 2003 Server	VScom high performance serial driver
DOS	Virtuell address driver and compatibility tools; real DOS Com port emulation
OS/2	Supported by COM16 driver in recent system releases Third party serial driver SIO.SYS available
Linux	Kernel 2.6 and up: built-in support Previous kernel: VScom high performance real tty driver
Div. UNIX	Configuration instructions

## Ordering Information

Art. No	4480
Product Name	VScom 800H PCIe
Packing List	VScom 800H PCIe card, CD, English Documentation
Optional Accessories	Connection Cable or Box is optional

VScom is offering a full range of serial communication solution for industrial application fields. Currently VScom designs and manufactures technologically advanced and cost effective Ethernet to Serial, RISC-Embedded Systems, CAN Bus to Serial, USB to Serial and PCI to Serial solutions. Envisioning the rapid growth in using Ethernet in different industrial fields. VScom is presently focusing on integration of LAN and Wireless LAN technology in serial connectivity products. Vscom brand products have been in the market since 1995 and are known as high quality, reliable and long life devices. More information on the products is available at [www.vscom.de](http://www.vscom.de)